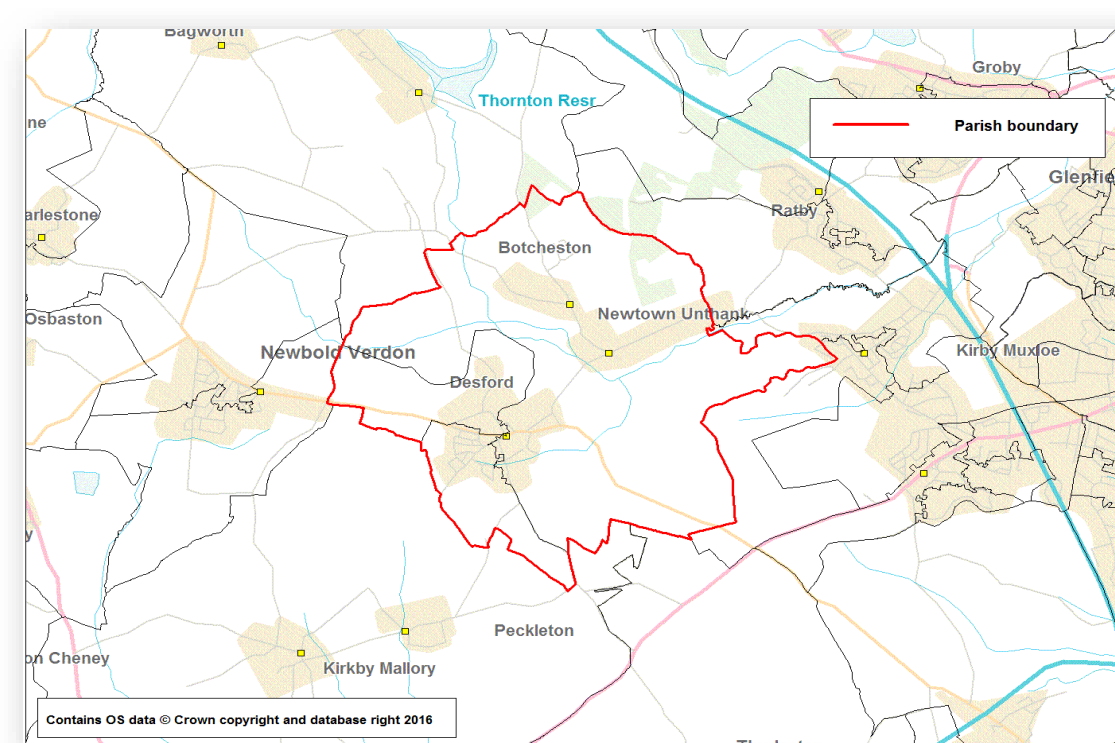


Desford Parish Census 2011 Profile

This Parish Profile presents data from the 2011 Census which took place on 27th March 2011.

It provides comparisons against the borough, region and England averages.



	Desford		Hinckley & Bosworth	East Midlands	England
	No	%	%	%	%
USUAL RESIDENTS BY AGE BAND					
Aged 0-4	199	5.1	5.5	6.0	6.3
Aged 5-15	478	12.2	12.2	12.5	12.6
Aged 16-64	2,432	61.9	63.9	64.5	64.8
Aged 65+	821	20.9	18.4	17.1	16.3
All Usual Residents	3,930	100.0	100.0	100.0	100.0
ETHNIC GROUP					
White	3,771	96.0	96.5	89.3	85.4
Mixed/Multiple Ethnic groups	45	1.1	1.0	1.9	2.3
Asian	94	2.4	2.1	6.5	7.8
Black	11	0.3	0.2	1.8	3.5
Other Ethnic Groups	9	0.2	0.2	0.6	1.0
All Usual Residents	3,930	100.0	100.0	100.0	100.0
RELIGION					
Christian	2,446	62.2	64.3	58.8	59.4
Buddhist	3	0.1	0.2	0.3	0.5
Hindu	34	0.9	0.8	0.3	1.5
Jewish	1	0.0	0.0	0.3	0.5
Muslim	18	0.5	0.5	0.3	5.0
Sikh	36	0.9	0.4	0.3	0.8
Other Religion	11	0.3	0.4	0.3	0.4
No Religion	1,091	27.8	26.9	0.3	24.7
Religion Not Stated	290	7.4	6.5	0.3	7.2
All Usual Residents	3,930	100.0	100.0	0.3	100.0
HIGHEST LEVEL OF QUALIFICATION					
No Qualifications	728	22.4	19.6	24.7	22.5
Level 1 Qualifications	402	12.4	13.3	13.9	13.3
Level 2 Qualifications	515	15.8	16.0	15.6	15.2
Apprenticeship	159	4.9	5.3	4.0	3.6
Level 3 Qualifications	372	11.4	11.7	12.9	12.4
Level 4 Qualifications and Above	984	30.2	28.2	23.6	27.4
Other Qualifications	93	2.9	6.0	5.3	5.7
All Usual Residents Aged 16 and Over	3,253	100.0	100.0	100.0	100.0
ECONOMIC ACTIVITY & INACTIVITY					
All Usual Residents Aged 16 to 74	2,911	100.0	100.0	100.0	100.0
Economically Active Total	2,050	70.4	73.5	69.3	69.9
Employee, Part-time	436	15.0	13.9	14.4	13.7
Employee, Full-time	1,169	40.2	44.6	38.8	38.6
Self Employed	310	10.6	8.9	8.7	9.8
Unemployed	71	2.4	3.6	4.2	4.4
Full-time Student (economically active)	64	2.2	2.5	3.3	3.4
Economically inactive Total	861	29.6	26.5	30.7	30.1
Retired	572	19.6	14.7	15.0	13.7
Student (including Full-Time Students)	94	3.2	3.9	5.8	5.8
Looking After Home or Family	81	2.8	3.5	4.0	4.4
Long-Term Sick or Disabled	90	3.1	2.8	4.1	4.0
Other	24	0.8	1.5	1.9	2.2

	Desford		Hinckley & Bosworth	East Midlands	England
	No	%	%	%	%
METHOD OF TRAVEL TO WORK					
Work Mainly at or From Home	128	4.4	3.8	3.3	3.5
Underground, Metro, Light Rail, Tram	2	0.1	0.0	0.2	2.6
Train	8	0.3	0.6	0.9	3.5
Bus, Minibus or Coach	57	2.0	2.1	4.0	4.9
Taxi	1	0.0	0.2	0.3	0.3
Motorcycle, Scooter or Moped	13	0.4	0.5	0.5	0.5
Driving a Car or Van	1,544	53.0	50.7	42.2	36.9
Passenger in a Car or Van	62	2.1	3.7	3.9	3.3
Bicycle	29	1.0	1.6	1.8	1.9
On Foot	103	3.5	5.8	7.1	6.9
Other Method of Travel to Work	18	0.6	0.3	0.3	0.4
Not in Employment	946	32.5	30.8	35.7	35.3
All Usual Residents Aged 16 to 74	2,911	100.0	100.0	100.0	100.0
HEALTH					
Very Good Health	1,879	47.8	46.3	45.3	47.2
Good Health	1,343	34.2	35.8	35.1	34.2
Fair Health	483	12.3	13.3	14.0	13.1
Bad Health	171	4.4	3.6	4.3	4.2
Very Bad Health	54	1.4	1.0	1.2	1.2
All Usual Residents	3,930	100.0	100.0	100.0	100.0
Long-Term Health Problem or Disability					
Day-to-Day Activities Limited a Lot	334	8.5	7.5	8.7	8.3
Day-to-Day Activities Limited a Little	392	10.0	9.5	9.9	9.3
Day-to-Day Activities Not Limited	3,204	81.5	83.0	81.4	82.4
All Usual Residents	3,930	100.0	100.0	100.0	100.0
Provision of Unpaid Care					
Provides No Unpaid Care	3,437	87.5	88.8	89.2	89.8
Provides 1 to 19 Hours Unpaid Care a Week	344	8.8	7.6	6.9	6.5
Provides 20 to 49 Hours Unpaid Care a Week	63	1.6	1.3	1.4	1.4
Provides 50 or More Hours Unpaid Care a Week	86	2.2	2.4	2.5	2.4
All Usual Residents	3,930	100.0	100.0	100.0	100.0
HOUSEHOLDS AND HOUSEHOLD SPACES					
All Household Spaces	1,673	100.0	100.0	100.0	100.0
Household Spaces With At Least One Usual Resident	1,627	97.3	96.7	96.0	95.7
Household Spaces With No Usual Residents (empty homes)	46	2.7	3.3	4.0	4.3
COMMUNAL ESTABLISHMENTS					
Number of communal establishments	4				
All usual residents in communal establishments	79				
TENURE					
All occupied Households	1,627	100.0	100.0	100.0	100.0
Owned; Owned Outright	707	43.5	37.2	32.8	30.6
Owned; Owned with a Mortgage or Loan	653	40.1	39.6	34.5	32.8
Shared Ownership (Part Owned and Part Rented)	8	0.5	0.6	0.7	0.8
Social Rented; Rented from Council (Local Authority)	105	6.5	7.1	10.1	9.4
Social Rented; Other	24	1.5	3.2	5.7	8.3
Private Rented; Private Landlord or Letting Agency	98	6.0	10.3	13.6	15.4
Private Rented; Other	17	1.0	1.1	1.3	1.4
Living Rent Free	15	0.9	1.0	1.3	1.3
ACCOMMODATION TYPE					
All household spaces (occupied + vacant)	1,673	100.0	100.0	100.0	100.0
Detached	844	50.4	37.1	32.2	22.3
Semi-Detached	638	38.1	38.1	35.1	30.7
Terraced	123	7.4	16.0	20.6	24.5
Flat, Maisonette or Apartment	67	4.0	8.5	11.7	22.1
Caravan or Other Mobile or Temporary Structure	1	0.1	0.4	0.4	0.4
NUMBER OF BEDROOMS					
All Household Spaces With At Least One Usual Resident	1,627	100.0	100.0	100.0	100.0
No Bedrooms	-	0.0	0.1	0.2	0.2
1 Bedroom	36	2.2	5.8	8.1	11.8
2 Bedrooms	340	20.9	26.7	26.5	27.9
3 Bedrooms	676	41.5	45.5	45.4	41.2
4 Bedrooms	431	26.5	17.4	15.4	14.4
5 or More Bedrooms	144	8.9	4.4	4.4	4.6

	Desford		Hinckley & Bosworth	East Midlands	England
	No	%	%	%	%
DEPRIVATION					
All occupied Households	1,627	100.0	100.0	100.0	100.0
Household is Not Deprived in Any Dimension	852	52.4	47.4	42.8	42.5
Household is Deprived in 1 Dimension	479	29.4	32.0	32.4	32.7
Household is Deprived in 2 Dimensions	249	15.3	17.2	19.6	19.1
Household is Deprived in 3 Dimensions	45	2.8	3.2	4.8	5.1
Household is Deprived in 4 Dimensions	2	0.1	0.2	0.4	0.5
HOUSEHOLD SIZE					
All Household Spaces With At Least One Usual Resident	1,627	100.0	100.0	100.0	100.0
1 Person in Household	395	24.3	28.1	29.0	30.2
2 People in Household	680	41.8	38.2	36.2	34.2
3 People in Household	245	15.1	15.8	15.6	15.6
4 People in Household	205	12.6	13.0	12.9	13.0
5 People in Household	76	4.7	3.7	4.3	4.7
6 People in Household	23	1.4	1.0	1.4	1.7
7 People in Household	2	0.1	0.1	0.3	0.4
8 or More People in Household	1	0.1	0.1	0.2	0.3
CAR OR VAN AVAILABILITY					
All occupied Households	1,627	100.0	100.0	100.0	100.0
No Cars or Vans in Household	151	9.3	14.6	22.1	25.8
1 Car or Van in Household	628	37.5	41.7	42.5	42.2
2 Cars or Vans in Household	628	37.6	33.4	27.4	24.7
3 Cars or Vans in Household	161	12.6	7.6	6.0	5.5
4 or More Cars or Vans in Household	59	2.9	2.7	2.0	1.9
All Cars or Vans in Area	2,636				

Source: Office for National Statistics licensed under the Open Government Licence v.3.0.

The data in this profile is derived from the following tables c/o NOMIS website and is subject to Crown Copyright.

Economic Activity, 2011 (QS601EW); Tenure, 2011 (KS402EW); Religion, 2011 (KS209EW); Accommodation Type - Households, 2011 (QS402EW); Number of Bedrooms, 2011 (QS411EW); Provision of Unpaid Care, 2011 (QS301EW); Households by Deprivation Dimensions, 2011 (QS119EW); Age Structure, 2011 (KS102EW); Tenure - Households, 2011 (QS405EW); Household Size, 2011 (QS406EW); Ethnic Group, 2011 (QS201EW); Long-Term Health Problem or Disability, 2011 (QS303EW); Car or Van Availability, 2011 (QS416EW); Method of Travel to Work, 2011 (QS701EW); Household Spaces, 2011 (QS417EW); Dwellings, Household Spaces and Accommodation Type, 2011 (KS401EW); General Health, 2011 (QS302EW); Highest Level of Qualification, 2011 (QS501EW)